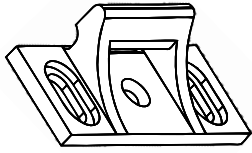


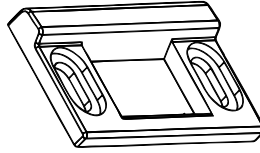
Accessories

Strikes

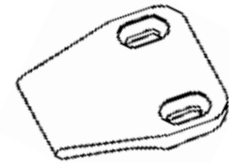
All required strikes are provided with exit devices. Replacement strikes are available as follows:



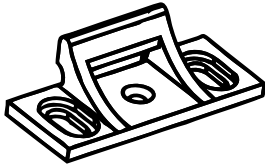
99 Surface - non-roller strike for 10/40 Series Rim Devices



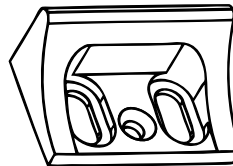
98 Semi-Mortise - applied strike for 10/40 Series Rim Devices



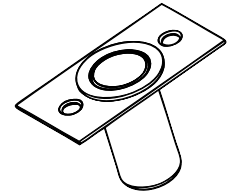
94 Double Door Strike - for 10/40 Series Rim Devices



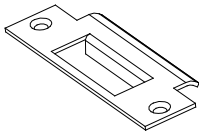
97 Top Surface - non-roller top strike for 20/21 Series Surface Vertical Rod Devices



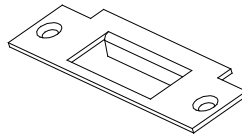
96 Top Surface - non-roller top strike for 50/51 Series Surface Vertical Rod Devices



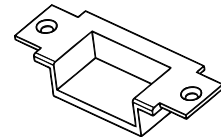
96/97 Bottom Dust Proof Strike - for 20 Series (97 Bottom) or 50 Series (96 Bottom) Surface Vertical Rod Devices



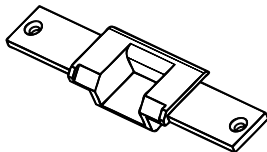
90 Standard ANSI Strike - for 30 Series Mortise Device



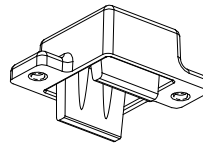
91 ANSI Flat Lip Strike - for 30 Series Mortise Device



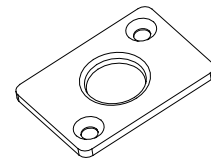
92 Double Door Strike with short open back - for 30 Series Mortise device



93 Double Door Strike with long open back - for 30 Series Mortise Device

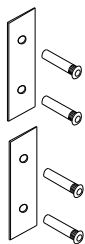


95T Top Strike - for 60/61/62/63/70/71/80/81/82/83 Series Concealed Vertical Rod Devices



95B Bottom Strike - for 60/62/70/80/82 Series Concealed Vertical Rod Devices

Through Bolt Mounting Plate Kit for SVR



TMP2 shown

TMP1 (Top Rod Only) / TMP2 (Top and Bottom Rod) - Through Bolt Mounting Plate Kit for use when replacing surface vertical rods on doors that are damaged or to cover existing exterior holes from previous device.

Kit is standard with two 630 finish plates and four 1/4-20 sex bolts. Contact factory for other finishes.

Cylinders



MC65 Mortise Cylinder - 1-1/8" 6-pin, keyed 5-pin. Available keyed alike or keyed differently. Finishes available: 605, 606, 612, 613, 626



RC65 Rim Cylinder - 6-pin, keyed 5-pin. Available keyed alike or keyed differently. Finishes available: 605, 606, 612, 613, 626



IC7 Interchangeable core cylinder housing - 7-pin, factory installed

Cylinder Collars

Cylinder Collars for 5 and 6 pin cylinders are provided with all outside trim.

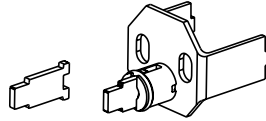


CCS 7/16" Short Cylinder Collar - Cylinder collar for 5 and 6 pin cylinders. Finishes available: 605, 606, 612, 613, 626



CCL 11/16" Long Cylinder Collar - Cylinder collar for 7 pin interchangeable core cylinders. Finishes available: 605, 606, 612, 613, 626

Cylinder Bracket Kit



CBK - Cylinder Bracket Kit consists of bracket and adjustable tailpiece assembly for rim cylinder used with other manufacturer's outside trim

03CAK - Cylinder Bracket Kit (for 60 Series Only) consists of bracket and adjustable tailpiece assembly for rim cylinder used with other manufacturer's outside trim

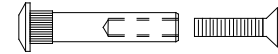
Security Screw Kits

Contains an assortment of screw sizes and types for securing covers in place

SSK1 - Security Screw Kit for rim exit device. Includes driver tip. Stainless Steel only

SSK2 - Security Screw Kit for SVR exit device. Includes driver tip. Stainless steel only

Sex Nut Kit



SN1 - Sex Nut Kit 1/4-20 — 2 per package

SN2 - Sex Nut Kit 10-32 — 2 per package

Tools



HDK - Hex Dogging Key - Heavy-duty with over molded ABS, dogging key is ergonomically designed to resist repetitive motion injuries.

Driver Tip for Security Screw:

TT10 - 6-32 Undercut FH Screws

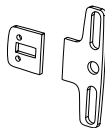
TT15 - 8-32 FH Screws

TT25 - 10-32 FH Screws

TT27 - 1/4-20 and #14 Screws

Glass Bead Kits

For use on doors with raised glass beads. Each kit contains one 1/4" shim set. Specify Kit number



Kit Number	For use with:
GB1	10 Series
GB2	40 Series
GB3	20 Series - 7 foot
GB4	21 Series - 7 foot
GB5	50 Series - 7 foot
GB6	51 Series - 7 foot
GB7	20 Series - 8 foot
GB8	21 Series - 8 foot

Kit Number	For use with:
GB9	50 Series - 8 foot
GB10	51 Series - 8 foot
GB11	20 Series - 10 foot
GB12	21 Series - 10 foot
GB13	50 Series - 10 foot
GB14	51 Series - 10 foot
GB15	V40 Series
GB16	30 Series

DETEX[®]
A Century of Security
1923-2023

Detex Corporation
302 Detex Drive
New Braunfels, Texas 78130-3045 USA
PH. (830) 629-2900
(800) 729-3839
FAX (800) 653-3839
<http://www.detex.com>
USA Sales:
marketing@detex.com
International Sales:
export@detex.com

Cancer & Reproductive Harm - www.detex.com/prop65